

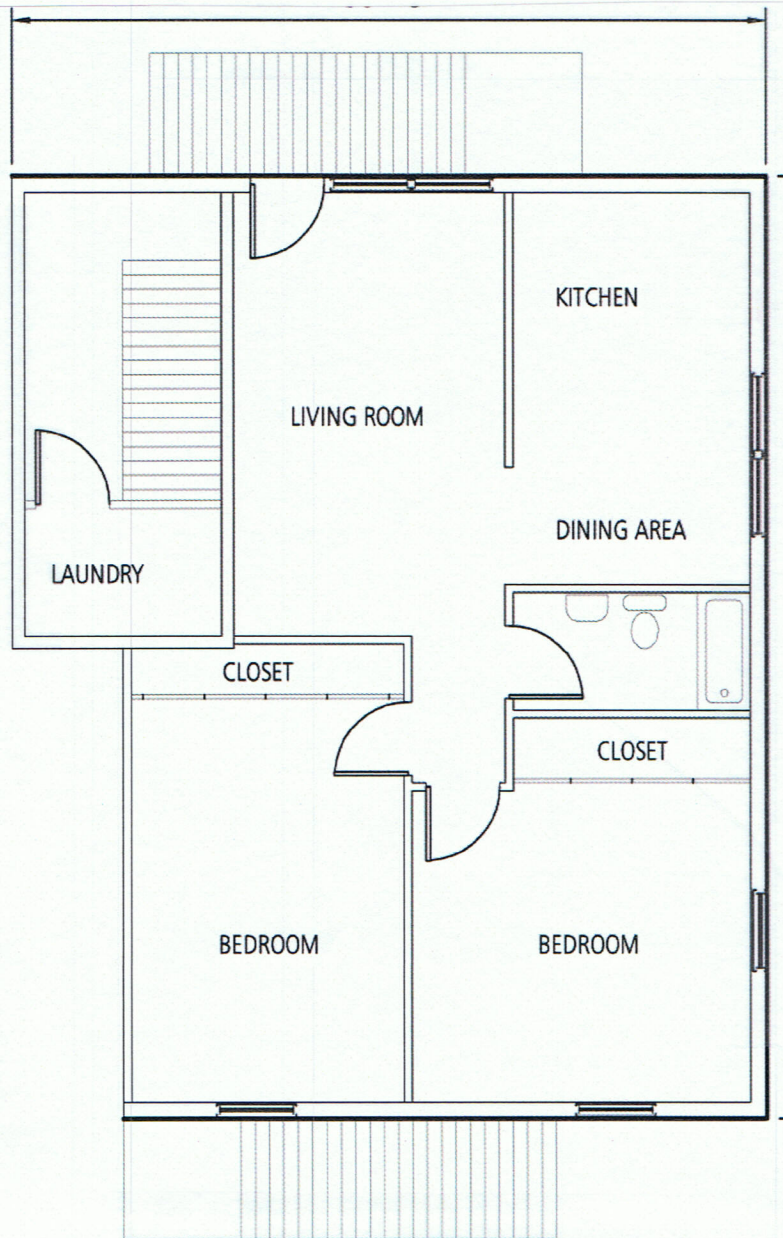
Azalea Park

2 BEDROOM 1 BATH FLAT 945 SQ FT

*Located Off Old Hammond Highway
Convenient to Florida Blvd. and Millerville*

Floor Plans Include:

All major appliances; Private Patio; Washer/Dryer Connections



Contact Garry Lewis Properties at (225) 930-9996 or email us at giprops@bellsouth.net